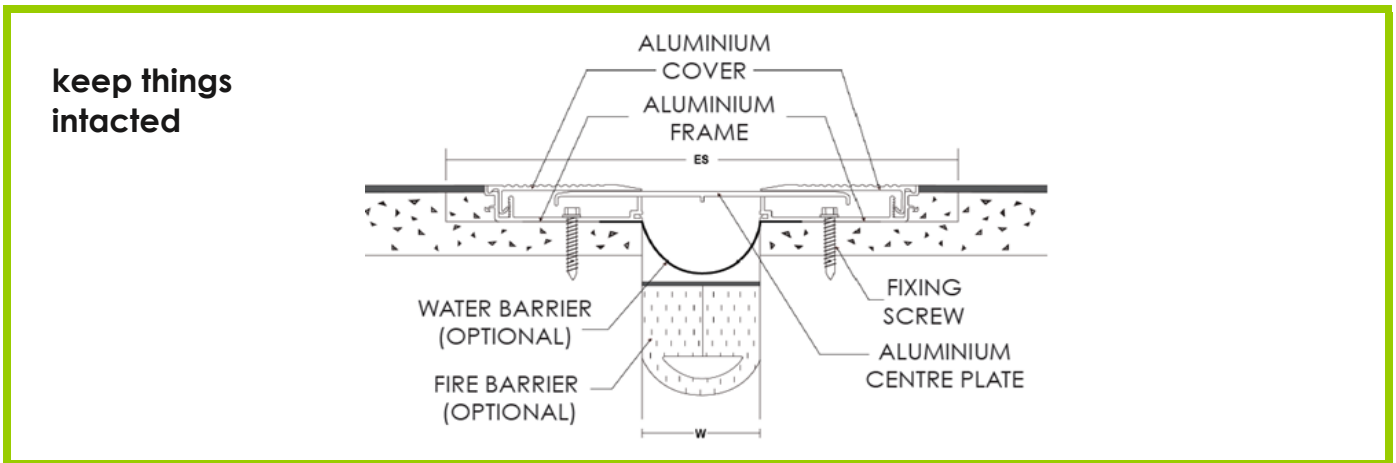


## Expansion Joint Covers

### System Type

- Central plate system
- Model: CP-FF-50 to CP-FF-125



### System Structure

- Extruded Aluminum T6061 to T6065
- Two side angle frames and central plate
- Water stop system
- Fire rated system (Optional)

### System Features

- Interior and exterior application
- X/Y/Z direction movement
- Floor to floor
- Floor to wall available

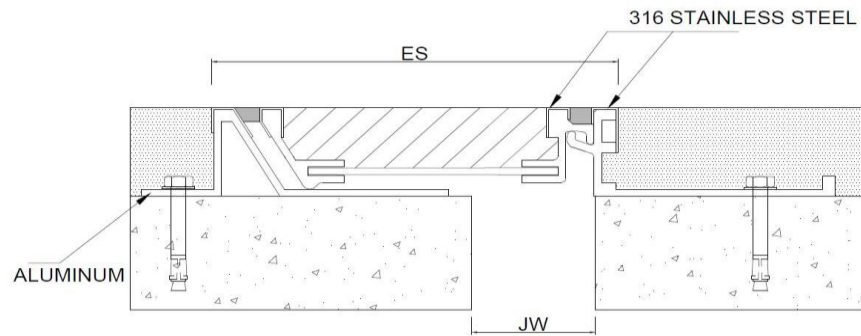
Model	CP-FF-50	CP-FF-75	CP-FF-100	CP-FF-125
Joint Width (mm)	50	75	100	125
Exposed Surface - Width (mm)	240	265	290	315
Overall Height (mm)	28	28	28	28
X-Direction, Minimum Opening (mm)	40	65	90	115
X-Direction, Maximum Opening (mm)	90	115	140	165
Y-Direction, Maximum Movement (mm)	+40	+40	+40	+40
Z-Direction, Maximum Movement (mm)	+15	+15	+15	+15

## Expansion Joint Covers

### System Type

- Decorated Matched System, floor to floor (DM series)
- Model: DM-SS-FF-125

### Keep things Intacted



### System Structure

- Base frames = Extrusion Aluminum 6061
- Edge plate = Stainless steel #316  
1.5mm (T), (#304 available)
- Water stop system / Fire rated system (Optional)

### System Features

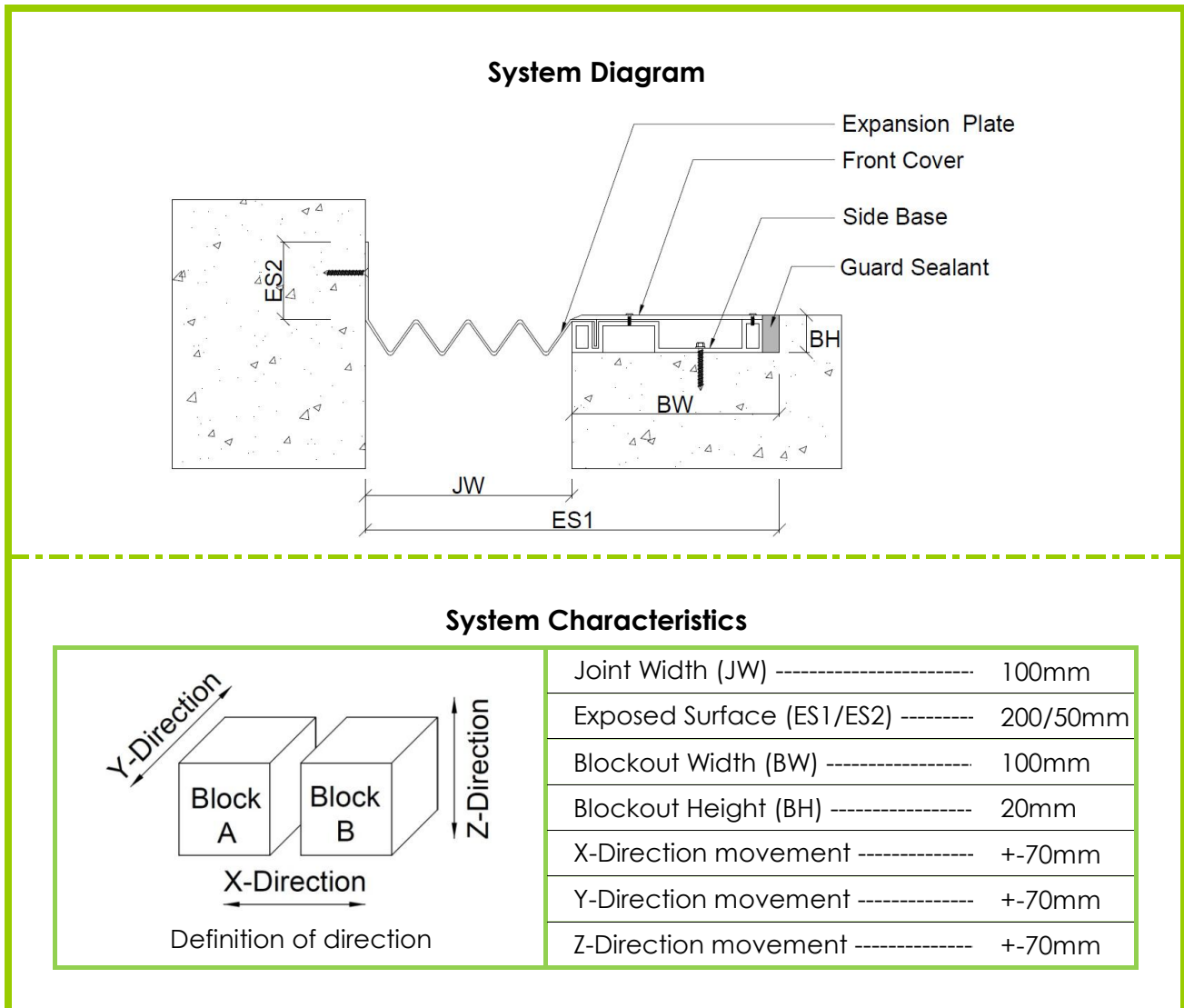
- Interior and exterior application
- X/Y/Z direction movement
- Floor to floor installation
- Optional heavy loading structure

Model	DM-SS-FF-125
Joint Width (mm)	125
Exposed Surface - Width (mm)	425
X-Direction, Minimum Opening (mm)	60
X-Direction, Maximum Opening (mm)	190
Y-Direction, Maximum Movement (mm)	+ -40
Z-Direction, Maximum Movement (mm)	+ -35

## Expansion Joint Covers

### Model: EP-SA-C-100

- Expansion plate system - Stainless steel/Aluminum - Corner type - Joint width



### System information

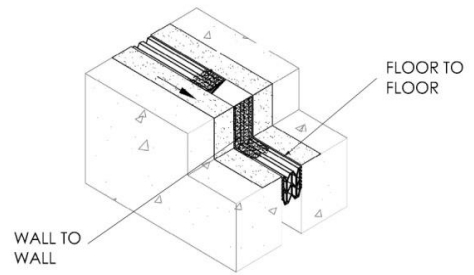
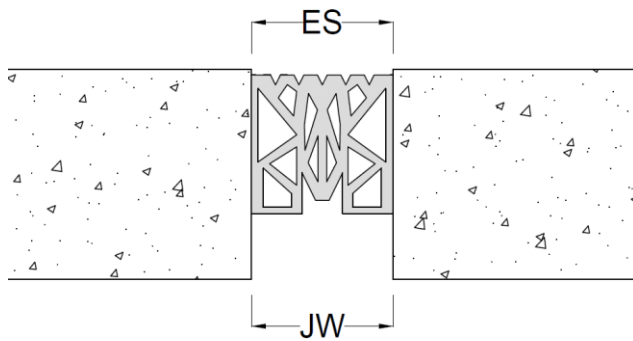
- Expansion plate = 0.5mm (T), Stainless steel #316
- Front cover = 1mm (T), Stainless steel #316
- Side base = 3mm (T), Aluminum 6063
- Water stop system = 1mm (T), Rubber membrane
- Guard sealant = 10mm x Blockout Height
- Interior application
- Wall and Ceiling application
- Stainless steel #304 available
- Fire rated system (Optional)

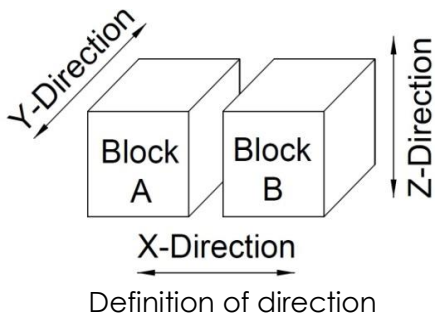
## Expansion Joint Covers

RR-F-50

🌿 Rubber system - Flat/Corner type - Joint width

### System Construction



 <p>Definition of direction</p>	<table border="0"> <tr> <td>Joint Width (JW) -----</td> <td>50</td> </tr> <tr> <td>Exposed Surface (ES) -----</td> <td>50</td> </tr> <tr> <td>X-Direction movement -----</td> <td>+25</td> </tr> <tr> <td>Y-Direction movement -----</td> <td>+5(*)</td> </tr> <tr> <td>Z-Direction movement -----</td> <td>+25</td> </tr> </table>	Joint Width (JW) -----	50	Exposed Surface (ES) -----	50	X-Direction movement -----	+25	Y-Direction movement -----	+5(*)	Z-Direction movement -----	+25
Joint Width (JW) -----	50										
Exposed Surface (ES) -----	50										
X-Direction movement -----	+25										
Y-Direction movement -----	+5(*)										
Z-Direction movement -----	+25										

All dimensions are in mm

(\*) Recommended range

### System information

- 🌿 Rubber compression seal
- 🌿 Epoxy fixing
- 🌿 Fire rated system (Optional)
- 🌿 Water stop system (Optional)
- 🌿 Interior application
- 🌿 X/Y/Z direction movement
- 🌿 Flat to Flat
- 🌿 Flat to Corner