



# Tactile



# Contents

Introduction	1
Warning / Positional Tile	2
Directional Tile	4
Rubber Tile	6

# Introduction

Stainless Steel and Rubber Tactile Indicators are an essential paving product for the orientation of those with vision impairment and for providing anti-slip surfaces for pedestrians.

**Australia Building Components (ABC)** design and manufacture the classic tactile indicators. We also offer variations that are complementary to many interior or exterior styles. All indicators feature good slip resistance and a high quality finish. We work with practicing professionals to ensure our indicators are easily installed, affordable and worry-free.

All indicators are supplied and installed to meet or exceed certification, in particular Australian and New Zealand Standards and Hong Kong Building Department's Code and Design Guidelines. Tailor made patterns and materials on request.

# Warning / Positional

**Model: PT - SS - RO - Ø35 / Ø23**

Directional Tile - Stainless Steel - Round - Diameter

## SYSTEM INFORMATION

Material :

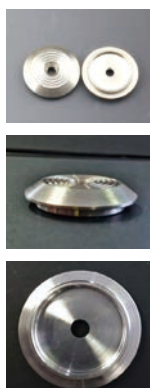
- Stainless Steel 304 / 316

Strip size :

- type A = 35mm(Dia) X 5mm(H)
- type B = 23mm(Dia) X 5mm(H)

Typical configuration :

- type A = 36 nrs / 300mm \* 300mm
- type B = 41 nrs / 300mm \* 300mm



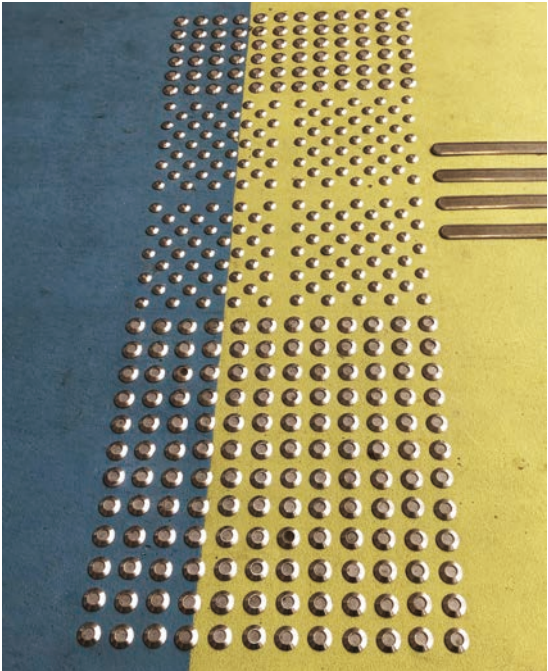
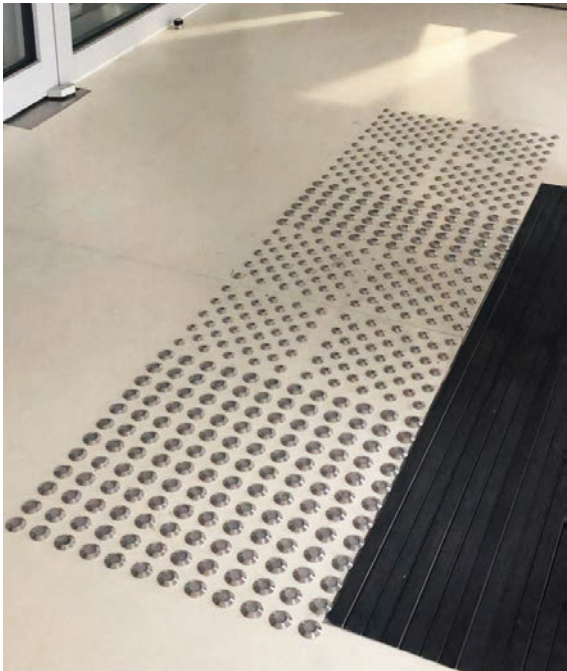
Surface:

- Dot type.
- Pineapple pin type
- Flat with polish.
- Flat with hairline.
- Non-Stud type selectable



JOB PHOTO

---



# Directional

**Model: DT-SS-RE-280Lx30Wx4.5H**

Directional Tile - Stainless Steel - Rectangle - Length X Width X Height

## SYSTEM INFORMATION

Material :

- Stainless Steel 304 / 316

Strip size :

- 280mm(L) X 30mm(W) X 4.5mm(H)

Typical configuration :

- 4 pcs / 300mm \* 300mm



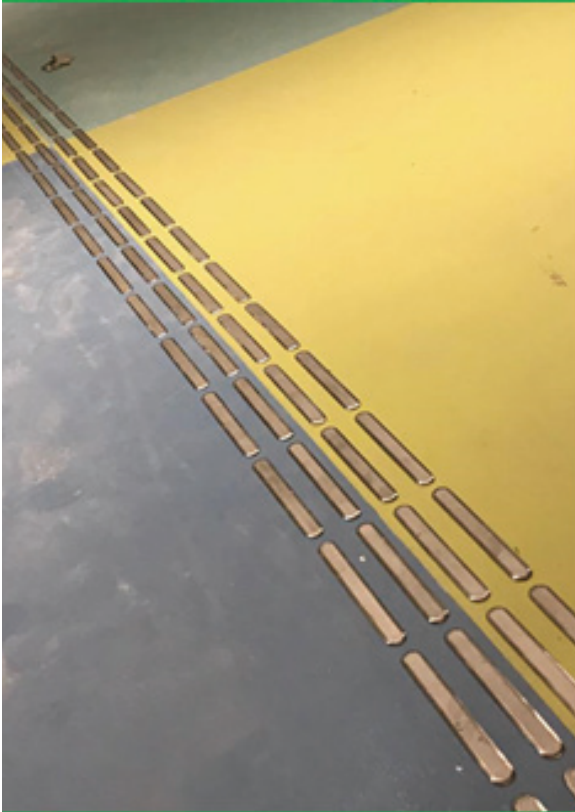
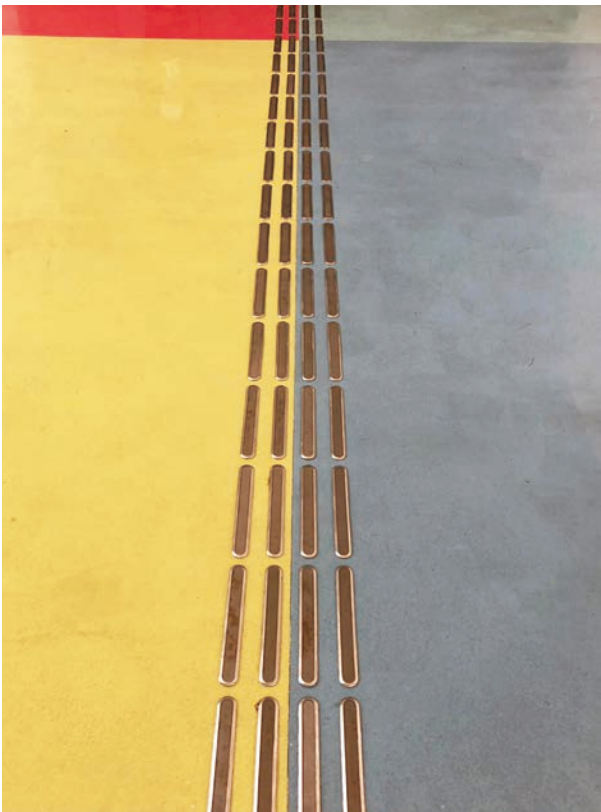
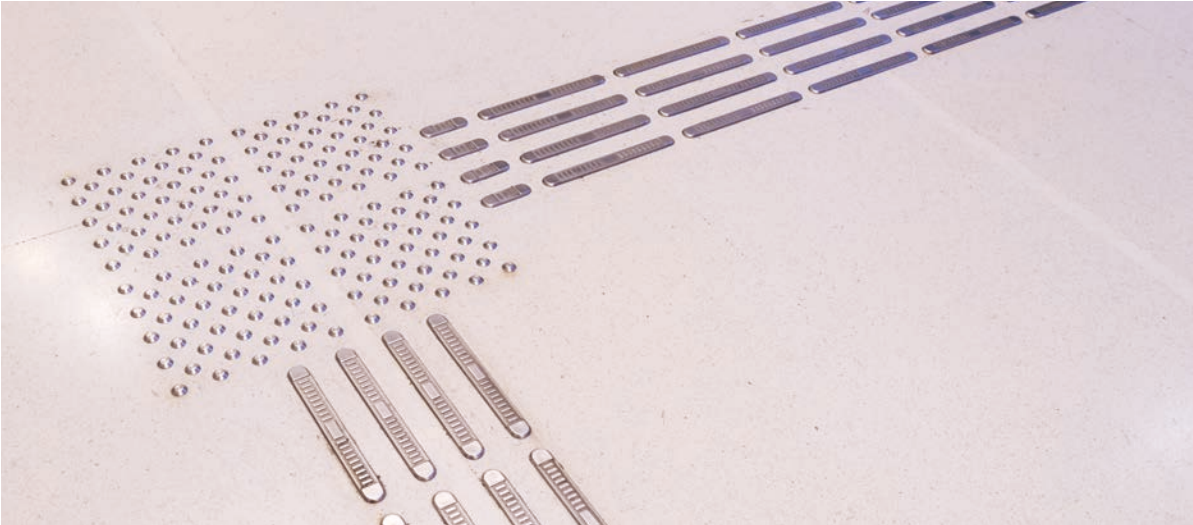
Surface:

- Dot type.
- Pineapple pin type
- Flat with polish.
- Flat with hairline.



JOB PHOTO

---



# Rubber

**Model: PT - RB - RO - Ø35 / Ø23**

Directional Tile - Rubber - Round - Diameter

**Model: DT-RB-RE**

Directional Tile - Stainless Steel - Rectangle

## SYSTEM INFORMATION

Material :

- Rubber

Plate size :

- 300mm \* 300mm

Thickness :

- 2 - 7mm

Typical configuration :

- Dot A = 36 nrs / 300mm \* 300mm
- Dot B = 41 nrs / 300mm \* 300mm
- Strip = 4 strips / 300mm \* 300mm



Surface:

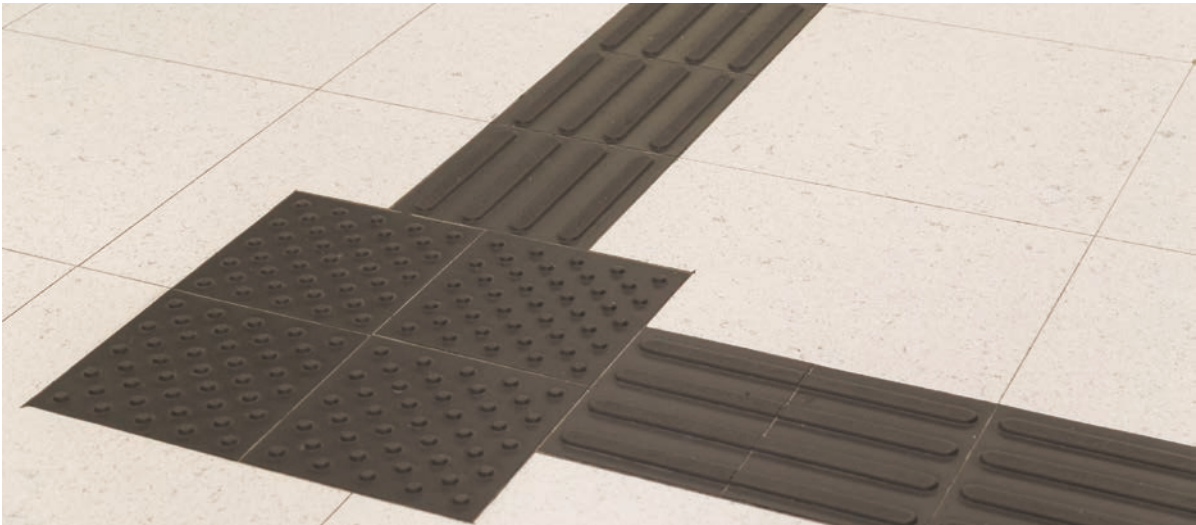
- Dot type.
- Strip type.





JOB PHOTO

---



Color

---





SEE MORE



**Contract Detail**

Whatsapp: +61 401 381 877 ( Leo )

E: [info@aubuild.com.au](mailto:info@aubuild.com.au) / [Leo@aubuild.com.au](mailto:Leo@aubuild.com.au)

W: [www.aubuild.com.au](http://www.aubuild.com.au)

A: 3 Walnut Court Calamvale, QLD 4116, Australia.

